

# ZOOM R8 Driver

## Installation Guide (Windows)

Copyright(C) 2016 ZOOM Corporation. All Rights Reserved.

● Zoom Corporation does not bear liability for any damages or third-party claims arising from the use of the software, whether directly or indirectly. Unauthorized redistribution, sale, leasing, renting, alteration, or reverse engineering of the software is prohibited. Features and specifications of the software and the contents of the documentation may be changed in future without notice.

Windows® is a registered trademark of Microsoft® Corporation.  
Note: All trademarks and registered trademarks in this document are for identification purposes only and are not intended to infringe on the copyrights of their respective owners.

The actual content of screens and messages on the computer may differ from the illustrations used in this manual.

<Contents>

1. Introduction .....	2
2. Operation Environment Requirements .....	2
Precautions .....	2
3. Updating the driver .....	3
4. Installation.....	4
5. Uninstallation.....	10

## 1. Introduction

Thank you for downloading the ZOOM R8 Driver.

This document describes how to install and uninstall the driver.

## 2. Operation Environment Requirements

OS :                    Windows® 7 SP1 or later (32bit/64bit)  
                          Windows® 8.1 (32bit/64bit)  
                          Windows® 10 (32bit/64bit)  
CPU:                  Intel® Pentium® Dual-Core 2.7GHz more  
MEMORY:            RAM 2GB more

### **Precautions**

- 1) Start installation and uninstallation disconnecting R8 from PC.**
- 2) Before starting this application, shut down all other applications that are running.**

### **3. Updating the driver**

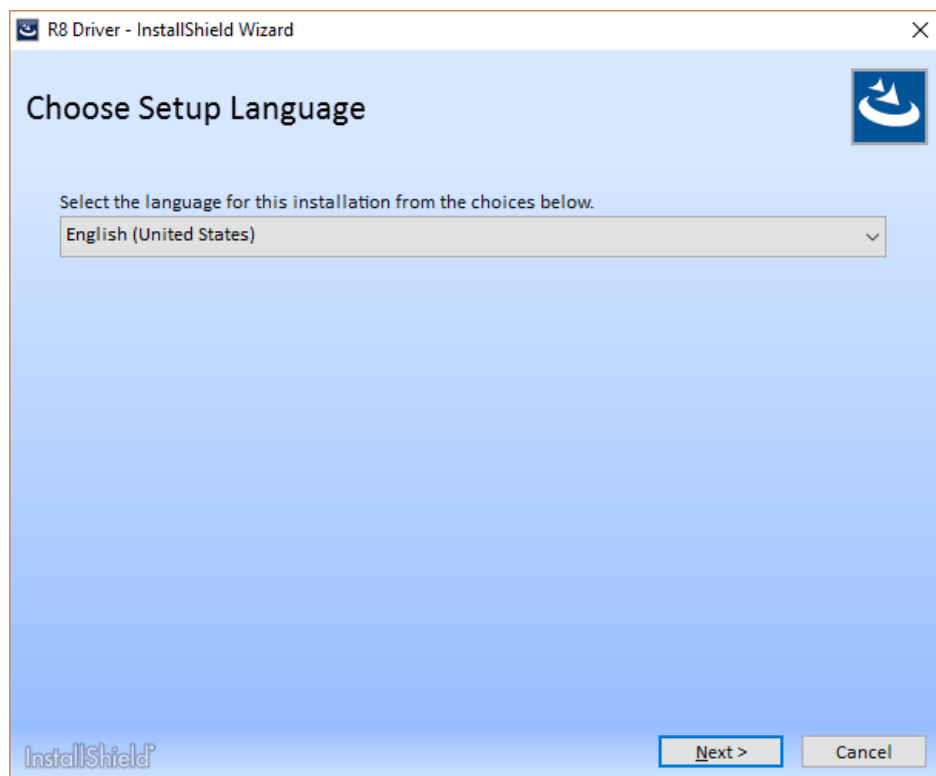
If a ZOOM R8 Driver is already installed, first uninstall the old driver.  
Then install the new driver.

#### 4. Installation

1. Start Windows without any USB devices including R8 (Except keyboard and mouse).
2. Shut down any applications that are running.
3. Double-click on the "setup.exe" icon.



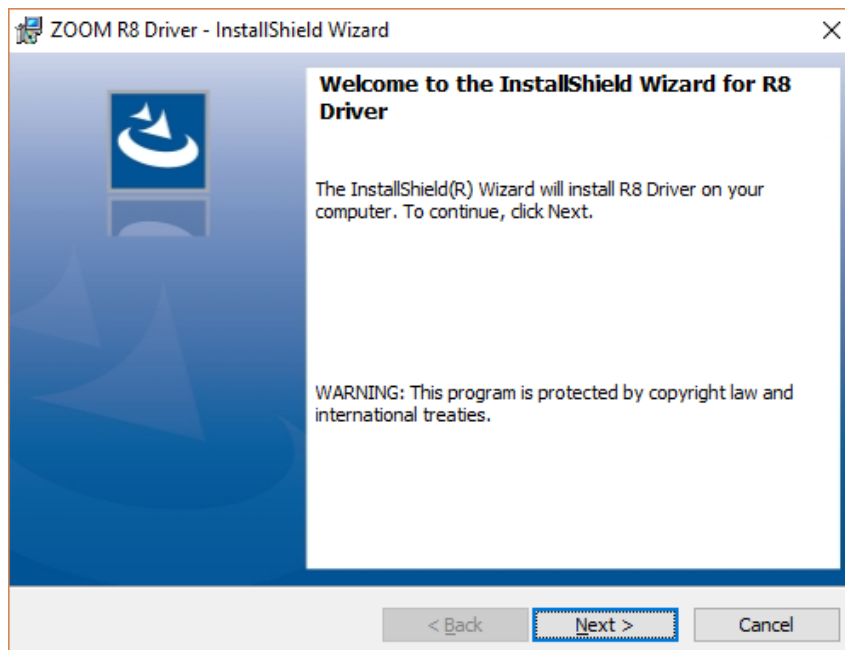
4. Select language and click [Next].



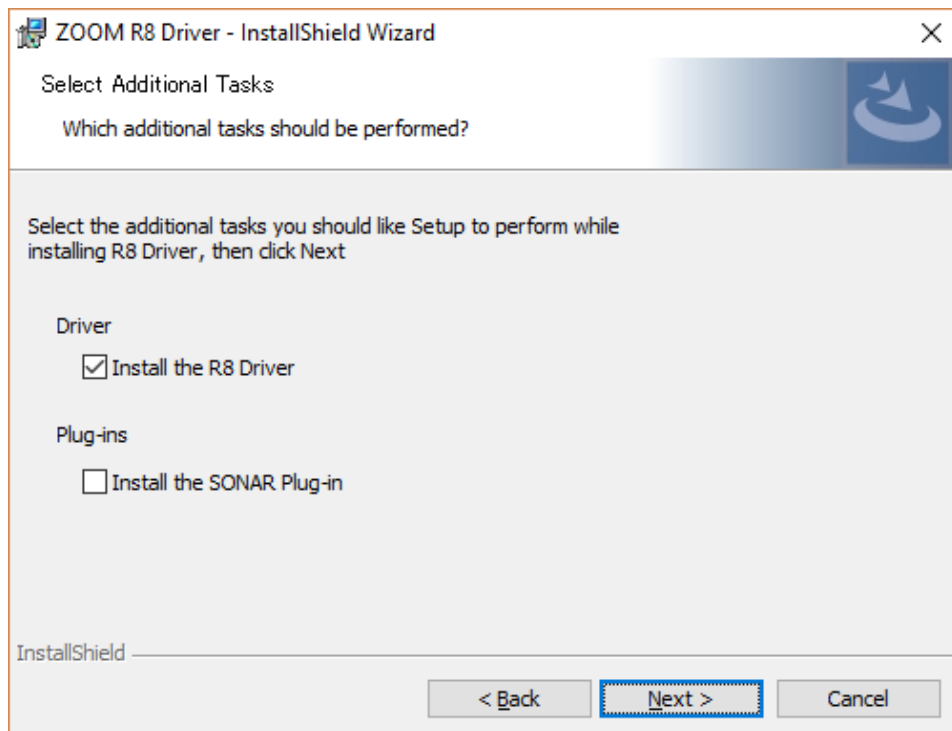
5. To start the installation, click [Install].



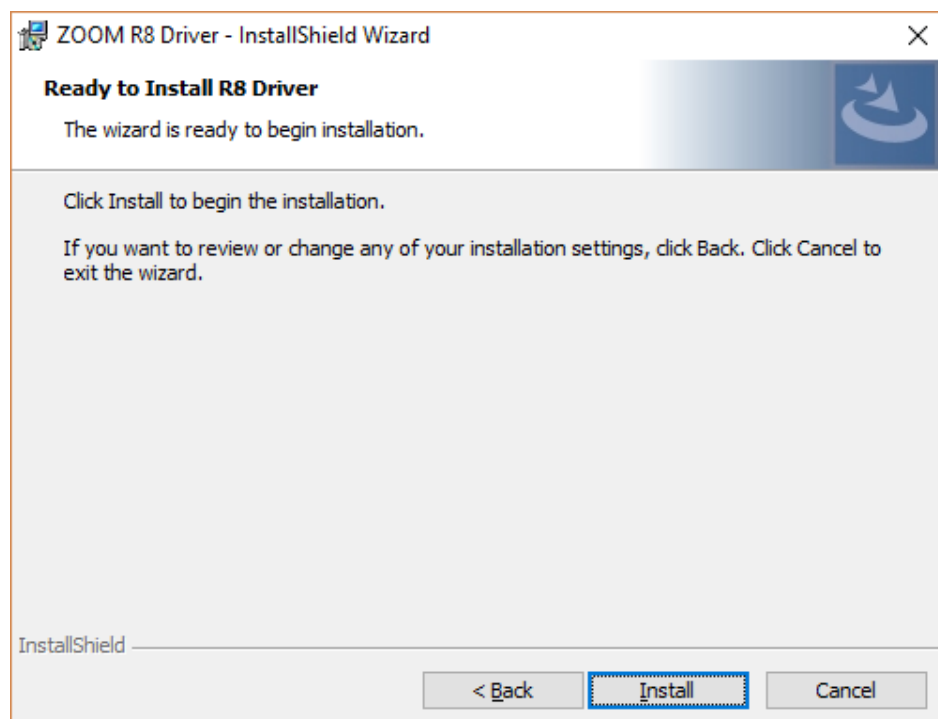
6. To start the installation, click [Next].



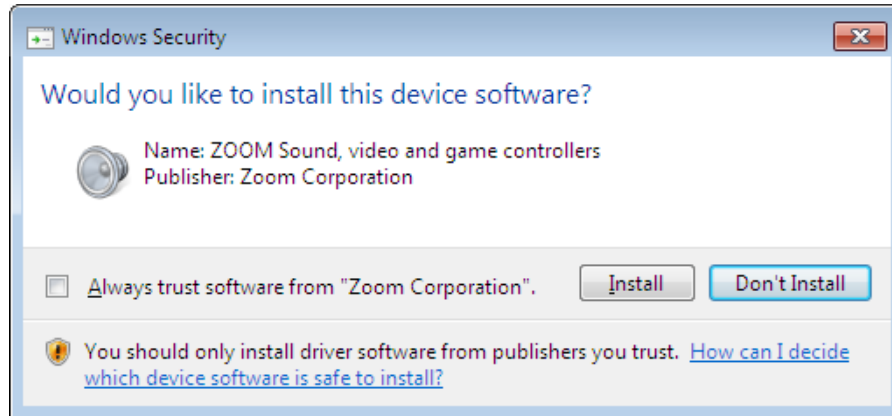
- When you use SONAR, select “Install the SONAR Plug-In”.



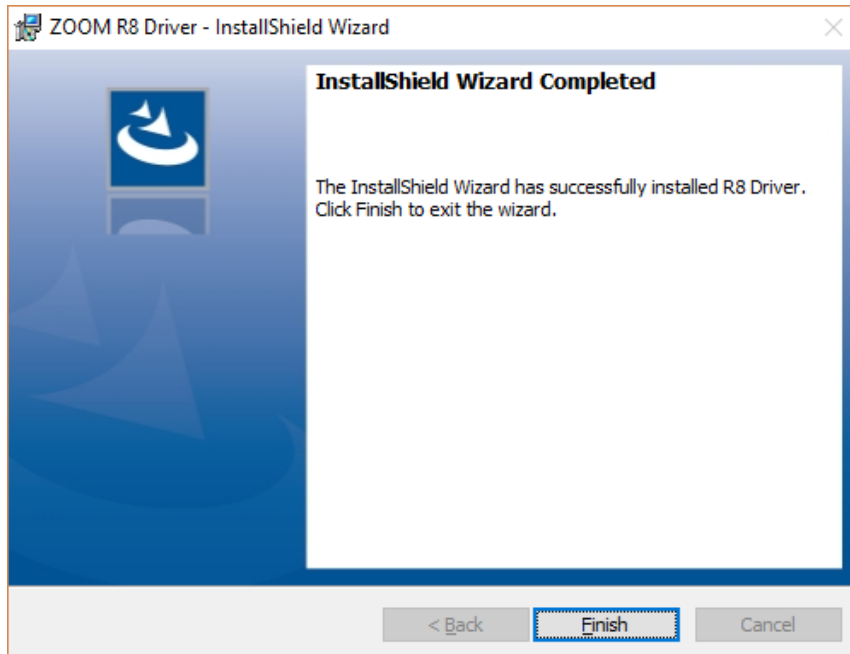
- To start the installation, click [Install].



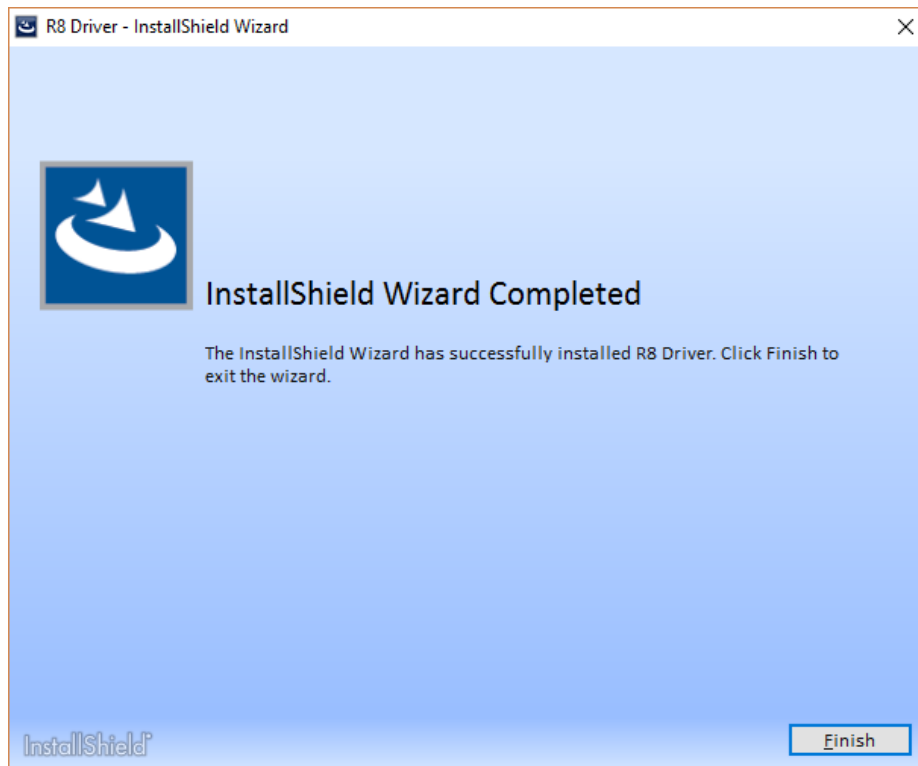
When a warning message “Windows security” appears, click [Install].



9. Click [Finish] to finish installation of InstallShield.



10. Click [Finish] to finish installation of InstallShield.

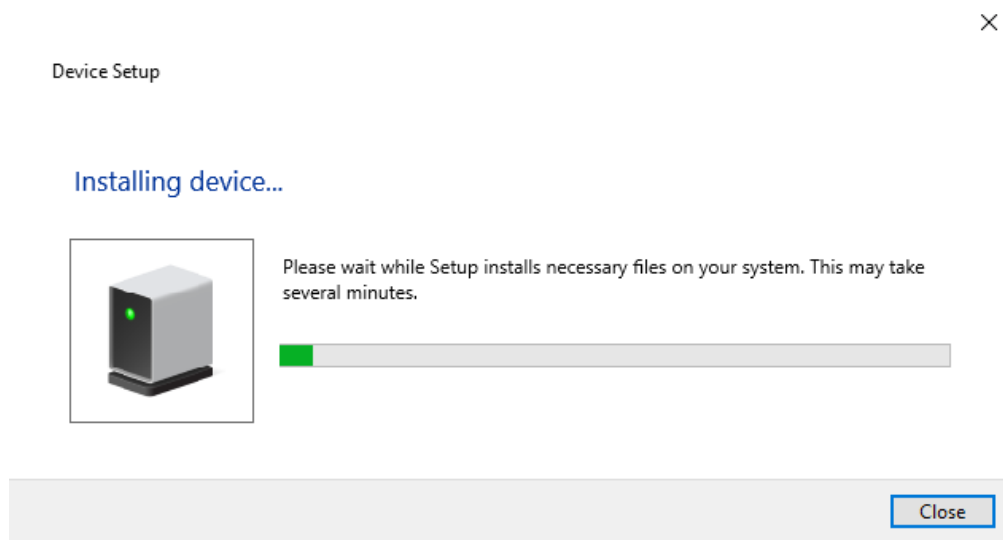




11. Next, connect the R8 to the computer using a USB cable.

\*For the information on connecting the R8 to a computer, see the section "Audio interface/control surface" of operation manual.

When R8 is connected to Computer, "Installing device" will launch and it finish automatically.

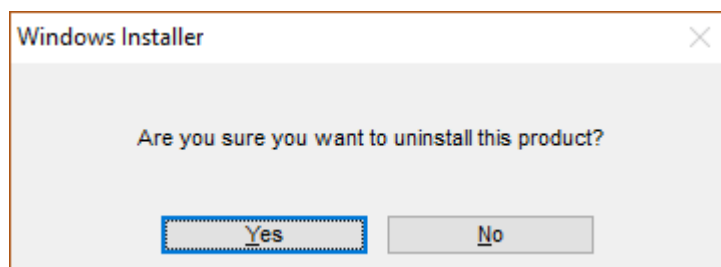


## 5. Uninstallation

1. Start Windows without any USB devices including R8 (Except keyboard and mouse).
2. Shut down any applications that are running.
3. Click on the Start→Programs→ZOOM→R8 Driver→" Uninstall R8 Driver " icon.



4. The uninstallation process starts. Confirm that you want to proceed by clicking [YES]. To cancel the process, click [NO].



\*The uninstallation is completed automatically.