

G1u System Version Update Guide

Copyright © 2010 ZOOM Corporation. All Rights Reserved.

ver1.20

- Zoom Corporation does not bear liability for any damages or third-party claims that arise from the use of this software, whether directly or indirectly. Unauthorized redistribution, sale, leasing, renting, alteration, or reverse engineering of the software is prohibited. Features and specifications of the software and the contents of the documentation may be changed in the future without notice.

The actual content of screens and messages on the computer might differ from the illustrations used in this manual.

Contents

Introduction.....	3
Operation environment requirements	3
Preparations.....	3
Check the current G1u firmware version	4
Install the standard driver on the PC	4
Firmware version update procedures.....	5

Introduction

Thank you for downloading the G1u v1.20 version update application.

This document describes how to update the G1u firmware version.

Operation environment requirements

Operating system: Windows XP (SP2 or later)/Windows Vista/Windows 7

Preparations

1) Log in to your computer with an account that has Administrator privileges.

2) Before starting this application, shut down all other applications that are running.

Check the current G1u firmware version

Refer to the procedures on page 27 of the G1u Operation Manual, and check the current firmware version of your G1u unit.

If the firmware is already v1.20 or a newer version, there is no need to use this application to update the firmware. If the current version is v1.20 or before, follow the procedures below to update the firmware.

Install the standard driver on the PC

If ZFX Tools or the ZOOM G series ASIO Driver has not been installed, or if you are using a USB port that is different from the port that was used when the driver was installed previously, the Found New Hardware Wizard appears.



If a screen like this appears, select “No, not this time” and then click “Next.”

When you click “Next,” installation of the standard driver begins automatically.

When installation of the standard driver completes, the Found New Hardware Wizard Finished screen appears. When it does, click “Finish” to continue to the next step.

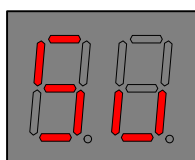
CAUTION

If the Found New Hardware Wizard screen appears again, follow the same procedures to complete installation of the standard driver before proceeding to the next step.

Note: Installing the ASIO Driver is not necessary to update the firmware version. If the ZOOM G Series ASIO Driver installer launches, click “Cancel” to cancel its installation.

Firmware version update procedures

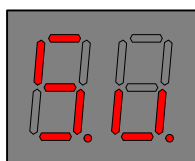
1. Before updating the firmware version, disconnect all MIDI and audio devices that are connected to your computer by USB cable. In addition, quit all applications that are running.
2. With the power of the G1u turned OFF, connect the unit with the computer via USB cable while pressing both the DOWN and UP foot switches. This operation puts the G1u into system update standby mode, and “Sv” appears on the display (as in the illustration below) to show that the unit is waiting for a version update.



CAUTION

If the ZFX Tools software that was bundled with the G1u is installed on the computer, ZFX Tools will automatically launch when you connect a G1u to the computer. The unit's firmware version cannot be updated when this software is running, so quit ZFX Tools before proceeding.

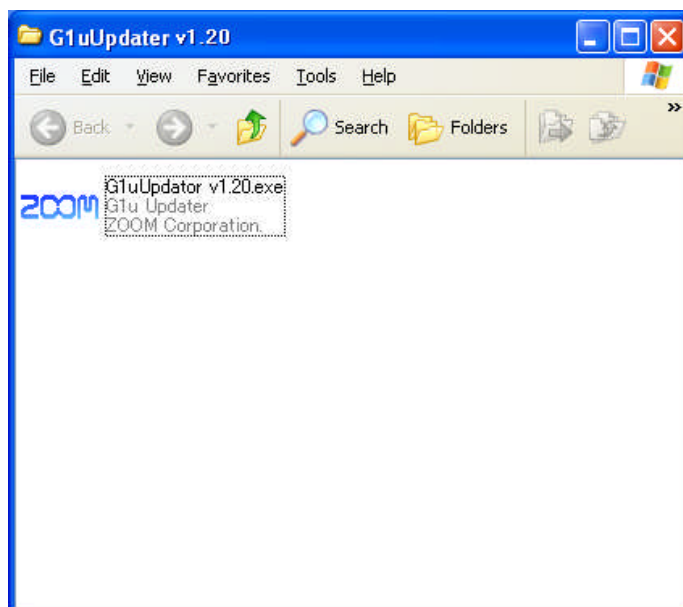
3. Wait a moment after connecting the unit for the computer to recognize the G1u. When it does, “S.v.” appears on the G1u display.



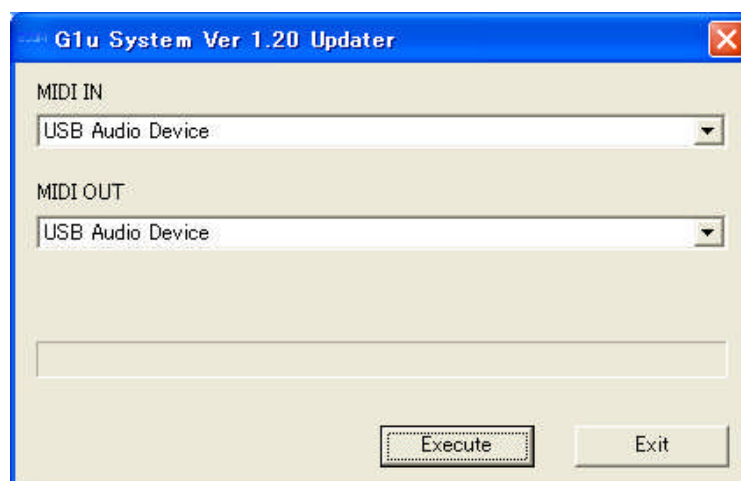
CAUTION

The USB audio driver is necessary to update the firmware version. Follow the wizard to complete its installation.

4. Double-click the “G1uUpdater v1.20.exe” icon to execute the firmware version updater application. [Please correct the spelling of the name of the software.]



When launched, a window like the following appears.



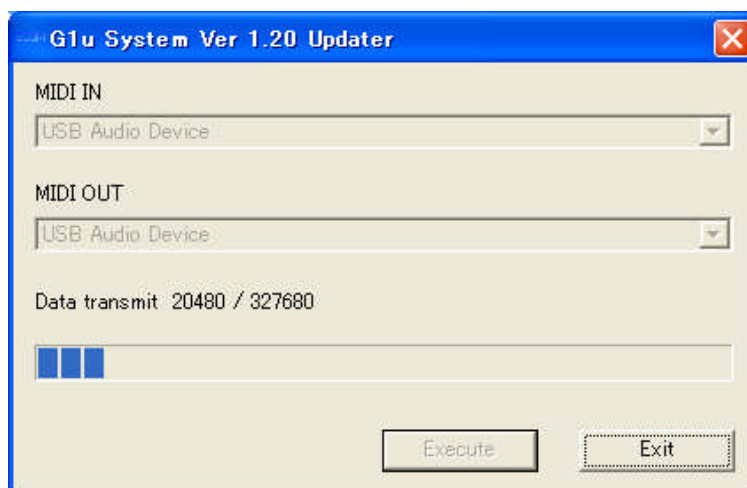
5. Confirm that “USB audio device” is shown in both the MIDI IN and MIDI OUT fields. If it does not appear in one of the fields, click the field and select “USB audio device.”

NOTE

If using Windows Vista, “G1u Ver x.xx” should appear in both the MIDI IN and MIDI OUT fields instead.

When using Windows XP with language other than English, select the device name corresponding to “USB audio device.”

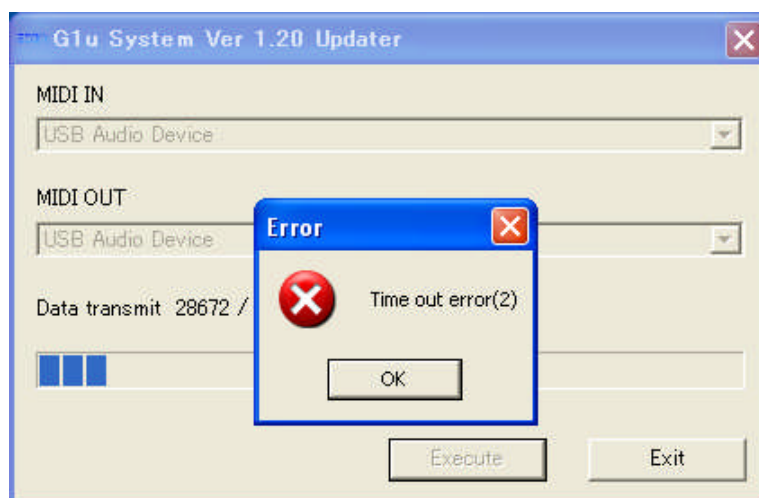
6. Click the “Execute” button to start the firmware version update. While the firmware version is being updated, the status of progress is shown as follows.



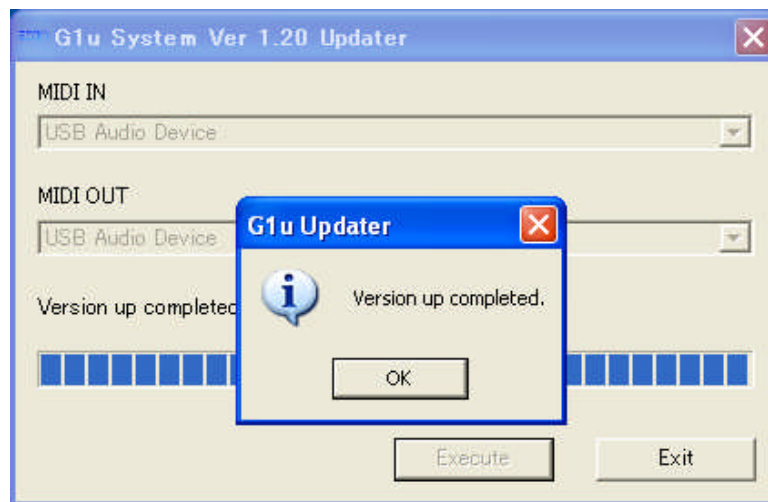
In addition, the “S.v.” message that appeared on the G1u display in step 3 blinks.
Do not disconnect the USB cable during the firmware update.

NOTE

When the following error (Time out error (*)) is displayed in the middle on an update, retry the procedure 2 to 6.

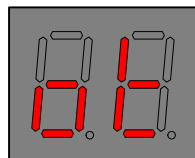


7. When updating the firmware version completes, a notification appears as follows.
[The notification should say “Version update completed.”]



Click the “OK” button followed by the “Exit” button to quit the firmware version updater application.

The “ok” message appears on the G1u unit display as shown below. When it does, disconnect the USB cable and turn the power OFF.



8. Finally, after updating the firmware, confirm the version on the G1u itself. Refer to the procedures on page 27 of the G1u Operation Manual, and check the current firmware version of your G1u unit. If the version is shown to be v1.20, then the firmware update has been completed successfully.

Updating the G1u firmware version has been finished.