

# G2Nu/G2.1Nu USB SUBSYSTEM Firmware Update Guide

## For Windows

Copyright(C) 2013 ZOOM Corporation. All Rights Reserved.

Ver1.10

- Zoom Corporation does not bear liability for any damages or third-party claims arising from the use of the software, whether directly or indirectly. Unauthorized redistribution, sale, leasing, renting, alteration, or reverse engineering of the software is prohibited. Features and specifications of the software and the contents of the documentation may be changed in future without notice.

Windows®, Windows® XP, Windows Vista® and Windows® 7 are trademarks or registered trademarks of Microsoft® Corporation. Other product names, registered trademarks and company names are properties of their respective owners.

Note: All trademarks and registered trademarks in this document are used only for identification. There is no intention to infringe on the copyrights of their owners.

The actual content of screens and messages on the computer may differ from the illustrations used in this manual.

## 1. Introduction

Thank you for downloading the following software to update your G2Nu/G2.1Nu.

“G2Nu/G2.1Nu USB SUBSYSTEM v1.10 Updater”

“G2Nu/G2.1Nu USB SUBSYSTEM Update Driver”

This document explains the G2Nu/G2.1Nu USB SUBSYSTEM Firmware updating process.

## 2. Supported operating systems

Windows® XP SP3 later (32bit)

Windows Vista® SP1 later (32bit, 64bit)

Windows® 7(32bit, 64bit)

Windows® 8(32bit, 64bit)

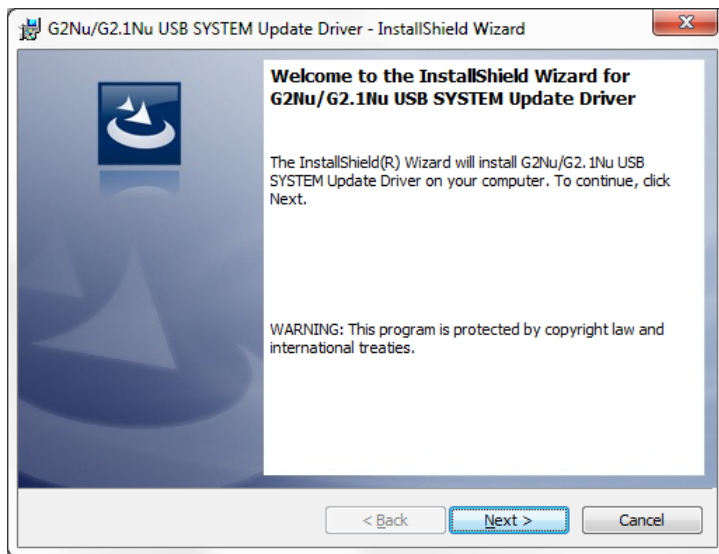
**CAUTION** Log in to your PC using an account with administrator privileges.  
Before launching this application, close all other running applications.

### 3. Installing the Driver

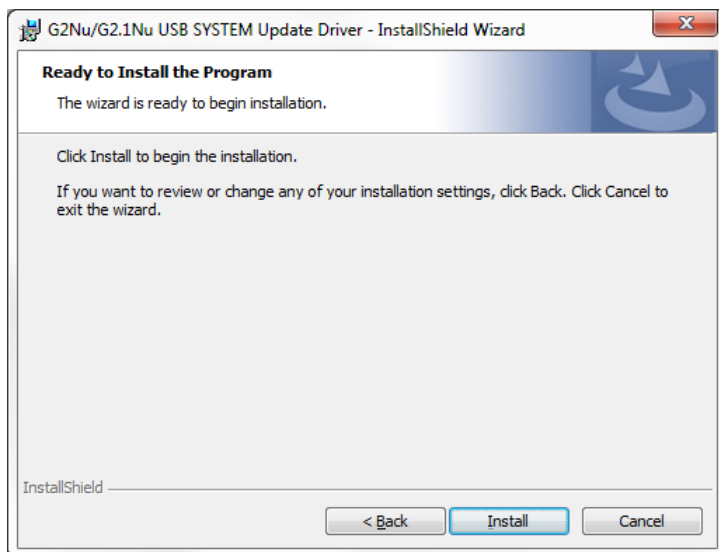
Installing the USB SUBSYSTEM Firmware Update Driver first.

Follow these procedures to install the Driver.

1. Before installing the Drive, disconnect all MIDI and audio devices connected by USB to the PC that you are using. You should also quit all applications running on the PC.
2. Double-click on the "G2Nu\_G2.1Nu\_USB\_SUBSYSTEM\_Update\_Driver32.exe" icon or "G2Nu\_G2.1Nu\_USB\_SUBSYSTEM\_Update\_Driver64.exe" icon depending on the operating system you use.
3. Select language and click [OK].
4. To start the installation, click [Next].



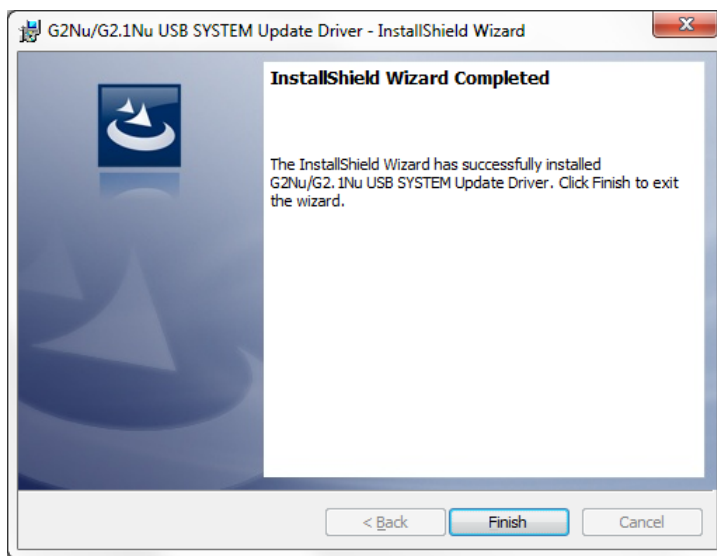
5. The License Agreement is displayed. Read the agreement and place a check mark in the "I accept the terms in the License Agreement" box to confirm your acceptance of the agreement. Then click [Next].
6. To start the installation, click [Install].



When a warning message “Windows security” appears, click [Install].



7. Click [Finish] to finish installation of InstallShield.



**CAUTION** If a message appears encouraging you to restart the PC, follow the instruction and restart it. Then, continue from “4. Updating the USB SUBSYSTEM Firmware”.

## 4. Updating the USB SUBSYSTEM Firmware

Next, update the USB SUBSYSTEM Firmware.

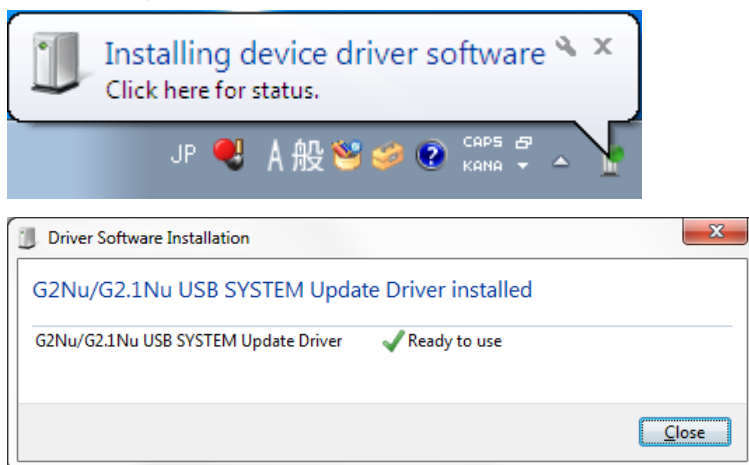
Follow these procedures to update the USB SUBSYSTEM Firmware.

1. With the G2Nu/G2.1Nu POWER switch still OFF, while pressing and holding both RHYTHM key and foot switch ▲, connect the G2Nu/G2.1Nu with the PC using a USB cable. This prepares the G2Nu/G2.1Nu to receive a USB SUBSYSTEM Firmware update.

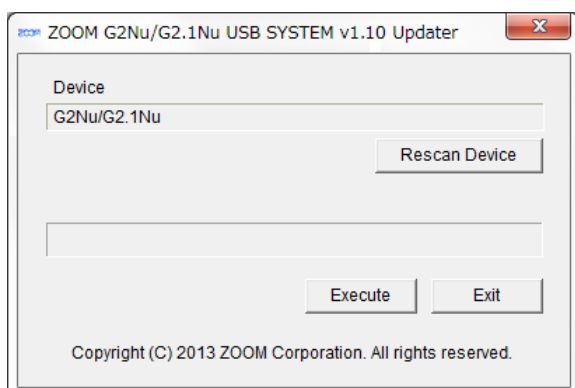
**VERSION UPGRADE**

**USB SYSTEM  
VERSION UP**

When G2Nu/G2.1Nu is connected to the PC, “Installing device driver software” will launch and it finish automatically.



2. Double-click the “G2Nu\_G2.1Nu USB SUBSYSTEM v1.10 Updater.exe” included in the download to launch the USB SUBSYSTEM Firmware updater application. After launching, a window that looks like this appears.

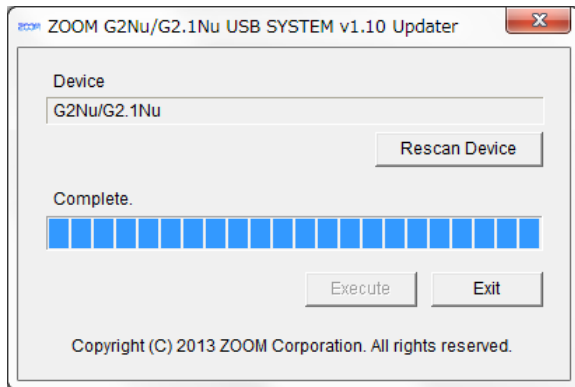


**CAUTION** If you are using Windows 8, when a “Windows protected your PC” message appears, click “More info” and then click “Run Anyway”.

3. Confirm that “G2Nu/G2.1Nu” appears in the Device field.
4. Click the “Execute” button to update the USB SUBSYSTEM Firmware . While updating, a progress bar shows the status.

**CAUTION** Do not disconnect the USB cable during the firmware update!

5. When the firmware update completes, a message like this appears.



Click Exit to quit the USB SUBSYSTEM Firmware updater application. Disconnect the USB cable.

**CAUTION** If updating the firmware fails, conduct the firmware update again using a USB 2.0 port.

This completes the firmware update.

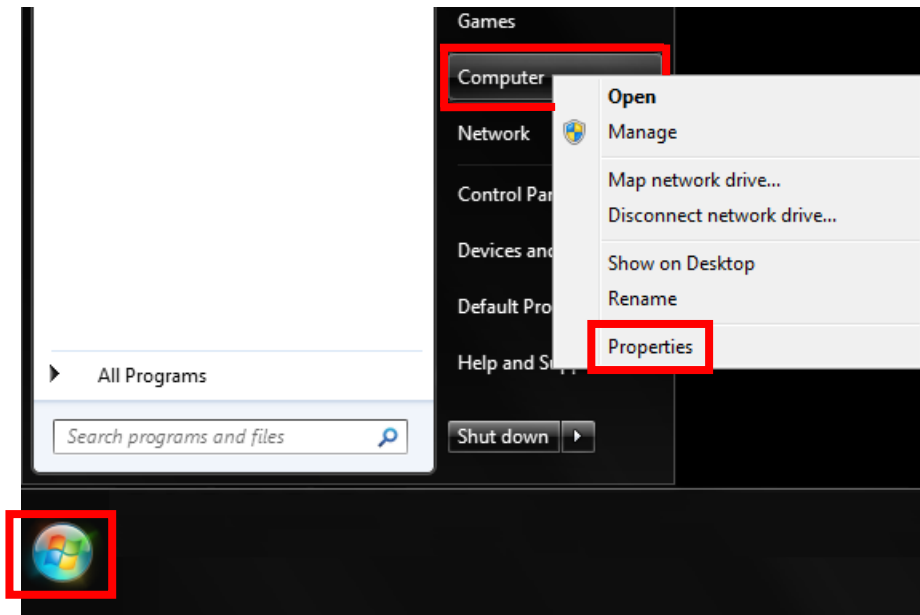
## 5. Checking the Firmware version

Check the USB SUBSYSTEM Firmware version using the PC Device Manager.

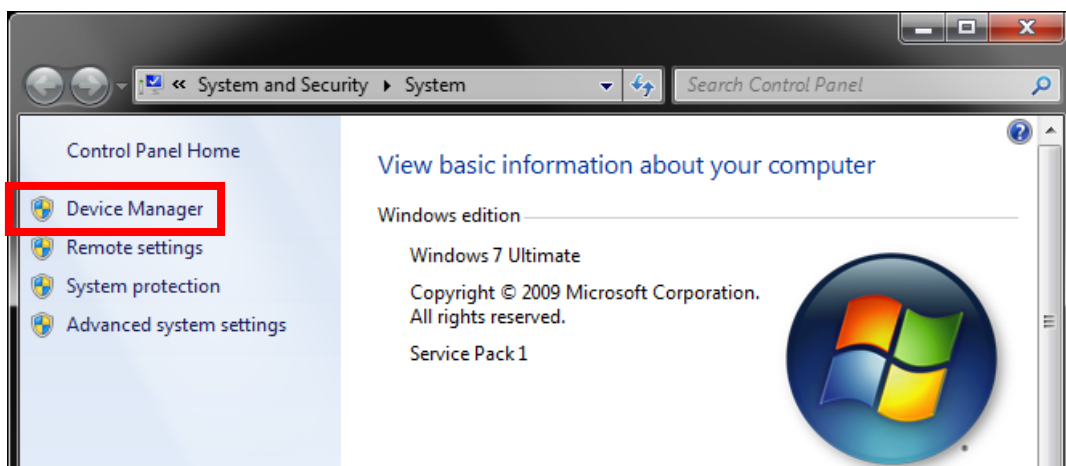
Follow these procedures to check the USB SUBSYSTEM Firmware version.

1. Before checking the USB SUBSYSTEM Firmware version, disconnect any MIDI or audio devices connected to the PC by USB cables. Moreover, quit any applications that are running.
2. With its power switch OFF, connect the G2Nu/G2.1Nu to the PC using a USB cable. If Edit&Share and the ZOOM G series ASIO Driver have not been installed, or if using a different USB port than the one that was used when the standard Windows driver was installed previously, “Driver Software Installation” will appear. Installation of the standard driver will complete after a while.

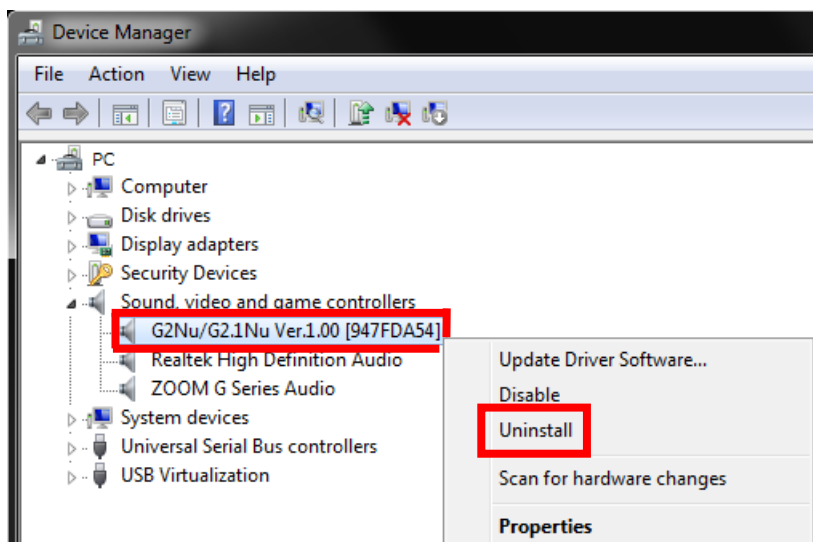
- Click the PC Start button and then right-click “Computer” and click “Properties.”



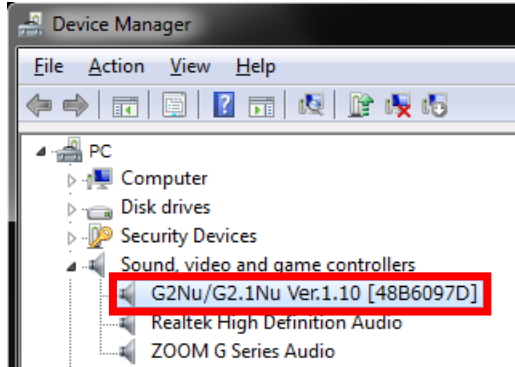
- When the System screen opens, click “Device Manager.”



- When the Device Manager opens, expand “Sound, video and game controllers.”
- Right-click “G2Nu/G2.1Nu,” and click “Uninstall” to uninstall it.



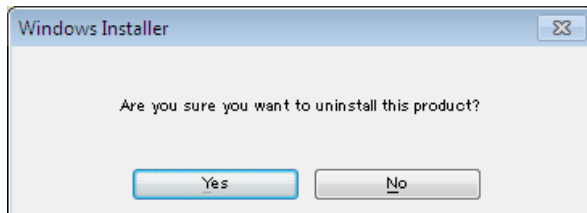
7. With the Device Manager still open, disconnect the USB cable.
8. With its power switch OFF, connect the G2Nu/G2.1Nu to the PC with the USB cable. When you do this, "Driver Software Installation" will appear. Installation of the standard driver will complete after a while.
9. The "Sound, video and game controllers" item of the Device Manager will refresh. Check the "G2Nu/G2.1Nu" version number.



## 6. Uninstalling the Driver

Follow these procedures to uninstall the USB Update Driver.

1. Start Windows without any USB devices including G2Nu/G2.1Nu (Except keyboard and mouse).
2. Shut down any applications that are running.
3. Click on the Start→Programs→ZOOM→G2Nu\_G2.1Nu USB SUBSYSTEM Update Driver→" Uninstall G2Nu\_G2.1Nu USB SUBSYSTEM Update Driver" icon.
4. The uninstallation process starts. Confirm that you want to proceed by clicking [YES]. To cancel the process, click [NO].



\*The uninstallation is completed automatically.