

# G3/G3X v2.10 Firmware Update Guide

## For Windows

Copyright(C) 2013 ZOOM Corporation. All Rights Reserved.

Ver2.10

● Zoom Corporation does not bear liability for any damages or third-party claims arising from the use of the software, whether directly or indirectly. Unauthorized redistribution, sale, leasing, renting, alteration, or reverse engineering of the software is prohibited. Features and specifications of the software and the contents of the documentation may be changed in future without notice.

Windows®, Windows® XP, Windows Vista® and Windows® 7 are trademarks or registered trademarks of Microsoft® Corporation. Other product names, registered trademarks and company names are properties of their respective owners.  
Note: All trademarks and registered trademarks in this document are used only for identification. There is no intention to infringe on the copyrights of their owners.

The actual content of screens and messages on the computer may differ from the illustrations used in this manual.

## 1. Introduction

Thank you for downloading the following software to update your G3/G3X.

“Zoom G3v2/G3X System v2.10 Updater”

“Zoom G3v2 Preset v2.00 Updater”

This document explains the G3/G3X firmware updating process.

**CAUTION** After updating the firmware and connecting the unit to a PC as an audio interface, you might not be able to hear sound from the PC. In this case, install the G-Series ASIO Driver version 2.0.0 or newer.

Check the ZOOM website (<http://www.zoom.co.jp/>) to download the G-Series ASIO Driver.

## 2. Supported operating systems

Windows® XP SP3 later (32bit)

Windows Vista® SP1 later (32bit, 64bit)

Windows® 7(32bit, 64bit)

Windows® 8(32bit, 64bit)

**CAUTION** Log in to your PC using an account with administrator privileges.  
Before launching this application, close all other running applications.

### 3. Checking the G3/G3X firmware version

Check the firmware version of your G3/G3X. Refer to page 21 of the G3 operation manual or page 25 of the G3/G3X operation manual. If the PRESET version is already 2.00 or later and the SYSTEM version is already 2.10 or later, you do not need to use this application to update the firmware.

If the SYSTEM version is higher than 2.00, use the following procedures to update the firmware (see P2).

[4. Updating the firmware from SYSTEM 2.00 or later](#)

If the SYSTEM version is lower than 2.00, use the following procedures to update the firmware (see P4).

[5. Updating the firmware from a SYSTEM version lower than 2.00](#)

## 4. Updating the firmware from SYSTEM 2.00 or later

### 4.1. Installing the standard Windows driver on the PC

Connect the AC adapter to the G3/G3X. Then, with the POWER switch set to ON, connect it with the PC using a USB cable. If Edit&Share or the ZOOM G series ASIO Driver is not installed or a different USB port was used when the driver was installed previously, a “Driver Software Installation” window appears. The standard driver will be installed after a short time.

**NOTE** Installation of the ASIO Driver is not necessary for the firmware update, so if the ZOOM G Series ASIO Driver installer launches, click Cancel to stop installation.

### 4.2. Updating the firmware

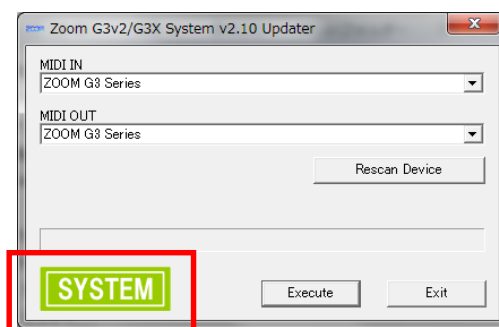
Follow these procedures to update the firmware.

1. Before updating the firmware, disconnect all MIDI and audio devices connected by USB to the PC that you are using. You should also quit all applications running on the PC.
2. Set the G3/G3X POWER switch to OFF. Then, while pressing and holding both PATCH SELECT keys (▼ and ▲), connect the G3/G3X with the PC using a USB cable. This prepares the G3/G3X to receive a firmware update. The G3/G3X displays the following message, showing that it is ready for a firmware update.



**CAUTION** If Edit&Share is launched when the G3/G3X is connected to the PC, the firmware update will not occur correctly, so quit Edit&Share if it is launched.

3. Update the SYSTEM firmware. Double-click the “Zoom G3v2 G3X **System** v2.10 Updater.exe” included in the download to launch the firmware updater application. After launching, a window that looks like this appears.



**CAUTION** If you are using Windows 8, when a “Windows protected your PC” message appears, click “More info” and then click “Run Anyway”.

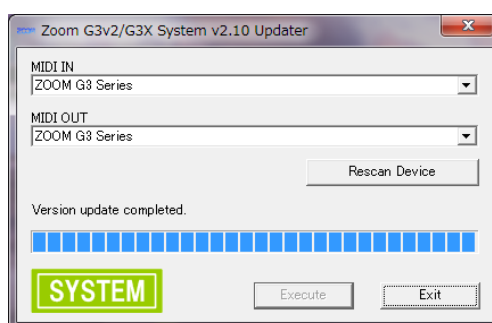
4. Confirm that “ZOOM G3 Series” appears in both the MIDI IN and MIDI OUT fields. If it does not, click the fields and select “ZOOM G3 Series” from the lists of MIDI devices.

**NOTE** If using Windows XP, “USB Audio Device” should appear in the MIDI IN and MIDI OUT fields instead of “ZOOM G3 Series”.

5. Click the “Execute” button to update the firmware. While updating, a progress bar shows the status. While updating, the VERSION UPDATE screen also appears on the display of the G3/G3X

**CAUTION** Do not disconnect the USB cable during the firmware update!

6. When the firmware update completes, a message like this appears.



Click Exit to quit the firmware updater application. Disconnect the USB cable when “Complete!” appears on the G3/G3X display.

**CAUTION** If updating the firmware fails, conduct the firmware update again using a USB 2.0 port.

This completes the firmware update.

## 5. Updating the firmware from a SYSTEM version lower than 2.00

Your G3 will gain the following functions when updated to firmware v2.00 (or later).

- The use of up to 6 effects at the same time
- An ON/OFF setting for the auto-save function

### 5.1. Warnings before updating







#### 5.1.1. Warning about custom patches being overwritten

To use a patch that was created using a G3 with version 1.12 or earlier, the patch data must be converted using the Edit&Share software. All data for the patches you created on the G3 will be **overwritten and erased** when you update it to version 2.00 or later, so you must back up the patches beforehand using Edit&Share to save them.

**CAUTION** Updating the firmware to version 2.00 or later will erase saved patches even though the HINT on page 31 of the G3 operation manual states, “Updating the firmware version will not erase saved patches.”

#### 5.1.2. Warning about reduced maximum delay time

When a patch created in G3 Ver. 1.12 or earlier is imported into G3 Ver. 2.00 or later, a maximum limit is applied to the time setting of delay effects. If a patch with a delay time setting that exceeds the G3 Ver. 2.00 maximum is imported, that setting will be changed to the new maximum value as shown below.

Effect type	Time setting before import	Time setting after import	Effect type	Time setting before import	Time setting after import
<b>Delay</b> 	2501 or higher ♪ x10 or more	→ 2500 ♪ x 10	<b>MultiTapD</b> 	2501 or higher ♪ x10 or more	→ 2500 ♪ x 10
<b>AnalogDly</b> 	2501 or higher ♪ x10 or more	→ 2500 ♪ x 10	<b>StereoDly</b> 	*TimeL/TimeR 1001 or higher ♪ x4 or more	→ 1000 ♪ x 4
<b>ReverseDL</b> 	1251 or higher ♪ x4 or more	→ 1250 ♪ x 4	<b>Dly+Rev</b> 	*DlyTime 1501 or higher ♪ x6 or more	→ 1500 ♪ x 6

### 5.2. Installing the standard Windows driver on the PC

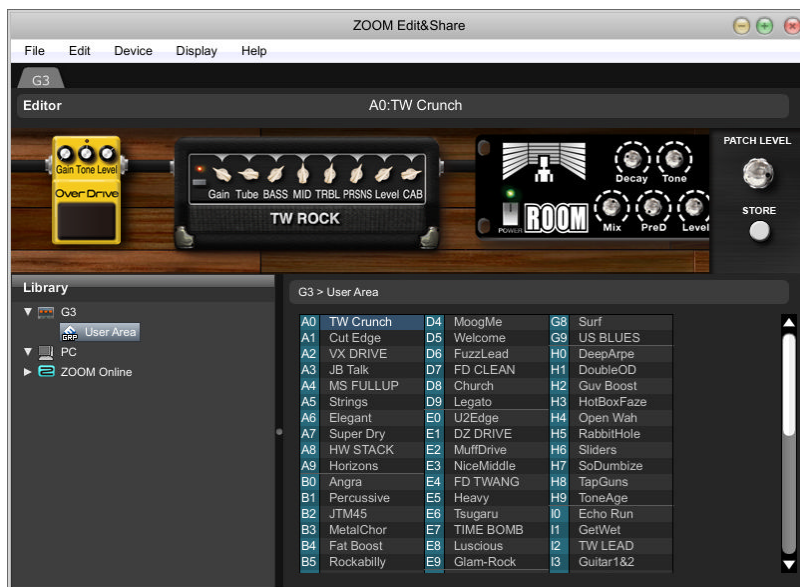
Connect the AC adapter to the G3. Then, with the POWER switch set to ON, connect it with the PC using a USB cable. If Edit&Share or the ZOOM G series ASIO Driver is not installed or a different USB port was used when the driver was installed previously, a “Driver Software Installation” window appears. The standard driver will be installed after a short time.

**NOTE** Installation of the ASIO Driver is not necessary for the firmware update, so if the ZOOM G Series ASIO Driver installer launches, click Cancel to stop installation.

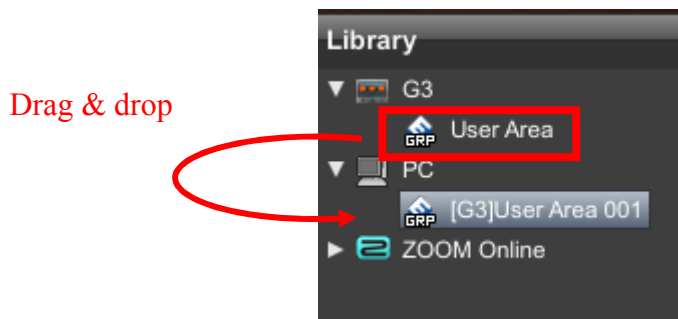
### 5.3. Using Edit&Share to backup your patch data

The patch data format used by G3 v1.12 firmware and earlier versions is different from that used by G3 v2.00 firmware and later, so they cannot be used as is. Use [Edit&Share ver5.0.0.0 or later](#) to back up and convert your patches.

1. Connect the G3 that is using v1.12 or an earlier version to a PC, and launch Edit&Share.



2. In the library, drag and drop the “User Area” under the G3 icon to under the PC icon.



This completes the backup of your patch data. We will convert your patch data after updating the G3 to v2.00 (or later).

### 5.4. Updating the firmware

In order to update a G3 to v2.00 or later, both PRESET and SYSTEM firmware must be updated. Follow these procedures to update both firmware.

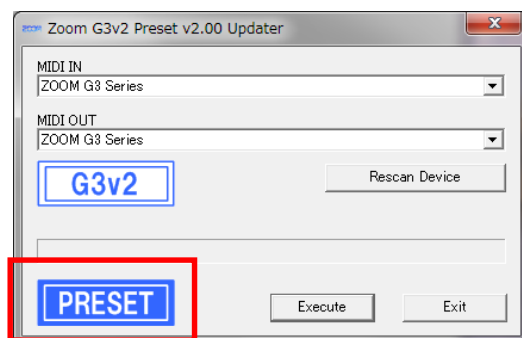
1. Before updating the firmware, disconnect all MIDI and audio devices connected by USB to the PC that you are using. You should also quit all applications running on the PC.

- Set the G3 POWER switch to OFF. Then, while pressing and holding both PATCH SELECT keys (▼ and ▲), connect the G3 with the PC using a USB cable. This prepares the G3 to receive a firmware update. The G3 displays the following message, showing that it is ready for a firmware update.



**CAUTION** If Edit&Share is launched when the G3 is connected to the PC, the firmware update will not occur correctly, so quit Edit&Share if it is launched.

- Update the PRESET firmware first. Double-click the “Zoom G3v2 [Preset](#) v2.00 Updater.exe” included in the download to launch the firmware updater application. After launching, a window that looks like this appears.



**CAUTION** If you are using Windows 8, when a “Windows protected your PC” message appears, click “More info” and then click “Run Anyway”.

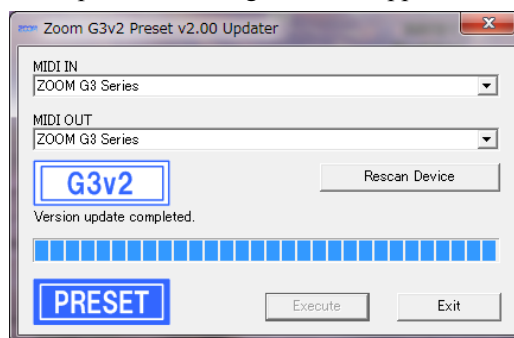
- Confirm that “ZOOM G3 Series” appears in both the MIDI IN and MIDI OUT fields. If it does not, click the fields and select “ZOOM G3 Series” from the lists of MIDI devices.

**NOTE** If using Windows XP, “USB Audio Device” should appear in the MIDI IN and MIDI OUT fields instead of “ZOOM G3 Series”.

- Click the “Execute” button to update the firmware. While updating, a progress bar shows the status. While updating, the VERSION UPDATE screen also appears on the display of the G3.

**CAUTION** Do not disconnect the USB cable during the firmware update!

6. When the firmware update completes, a message like this appears.



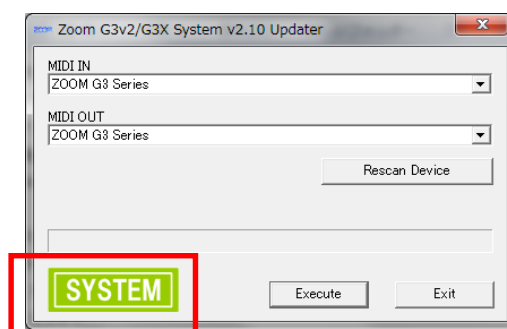
Click Exit to quit the firmware updater application. Disconnect the USB cable when “Complete!” appears on the G3 display.

**CAUTION** If updating the firmware fails, conduct the firmware update again using a USB 2.0 port.

7. Next, update the SYSTEM firmware.

With the G3 POWER switch still OFF, while pressing and holding both PATCH SELECT keys (▼ and ▲), connect the G3 with the PC using a USB cable. This prepares the G3 to receive a firmware update.

8. Double-click the “Zoom G3v2 G3X System v2.10 Updater.exe” included in the download to launch the firmware updater application. After launching, a window that looks like this appears.



**CAUTION** If you are using Windows 8, when a “Windows protected your PC” message appears, click “More info” and then click “Run Anyway”.

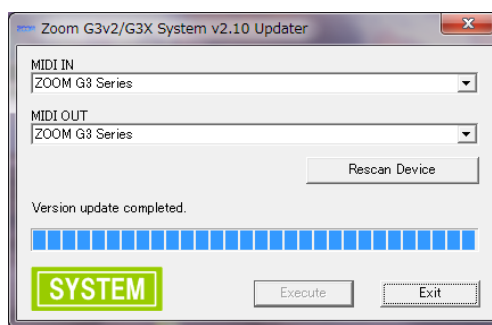
9. Confirm that “ZOOM G3 Series” appears in both the MIDI IN and MIDI OUT fields. If it does not, click the fields and select “ZOOM G3 Series” from the lists of MIDI devices.

**NOTE** If using Windows XP, “USB Audio Device” should appear in the MIDI IN and MIDI OUT fields instead of “ZOOM G3 Series”.

10. Click the “Execute” button to update the firmware. While updating, a progress bar shows the status. While updating, the VERSION UPDATE screen also appears on the display of the G3.

**CAUTION** Do not disconnect the USB cable during the firmware update!

11. When the firmware update completes, a message like this appears.



Click Exit to quit the firmware updater application. Set the POWER switch to OFF when “Complete!” appears on the G3 display.

**CAUTION** If updating the firmware fails, conduct the firmware update again using a USB 2.0 port.

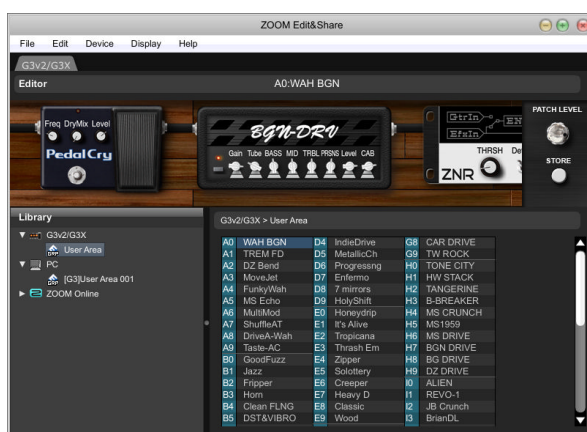
12. Finally, use the All Initialize function to complete the G3 firmware update. While pressing the STORE key, set the POWER switch to ON. Then follow the instructions on screen to execute the All Initialize function.

This completes the firmware update.

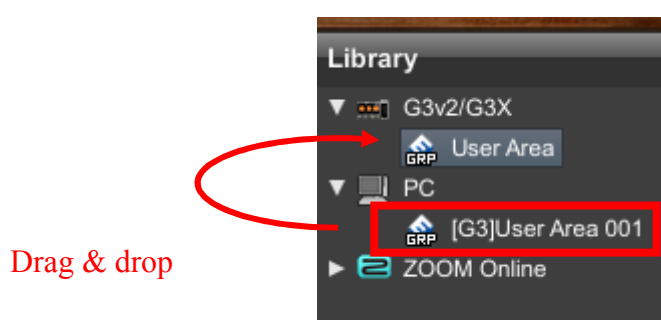
Next, you should convert your patch data.

## 5.5. Using Edit&Share to convert patch data

Connect the G3 using v2.00 firmware (or a later version) to the PC and launch Edit&Share.

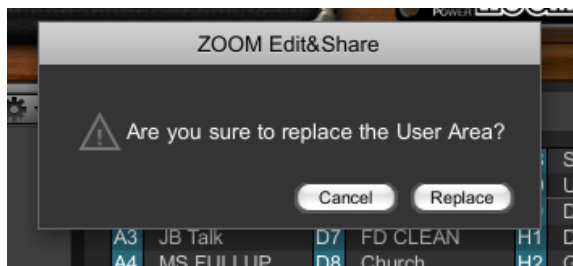


Drag and drop the patch group backed up in the library (“[G3]User Area001” in this case) to the G3v2/G3X User Area.





Drag and drop the patch group backed up in the library (“[G3]User Area001” in this case) to the G3v2/G3X User Area.



This completes conversion of the patch data. Now, patches saved with G3 v1.12 and earlier versions can be used by G3 v2.00 and later versions.

Only the first three effects are used by the converted patches, but G3 v2.00 and later versions allow the use of up to six effects simultaneously, so “Select effect type” appears for the three empty effects.

## 5.6. New and changed functions in G3 v2.00 and later

G3 v2.00 and later versions have the following new and changed functions. Download the G3/G3X Operation Manual from the ZOOM website (<http://www.zoom.co.jp/>) and refer to the pages noted in parentheses below for details about how to use them.

1. The use of six effects simultaneously and a scroll function to access all six effects (→ P11 and P12 HINT)

The PATCH SELECT keys now function as SCROLL keys.

2. AUTO SAVE setting (→ P24)

The GLOBAL parameters now include an option to turn AUTO SAVE ON and OFF.

3. New amp models (→ P45)

The following amp models have been added.

- DELUXE-R
- VX JMI
- CAR DRIVE
- TONE CITY
- MS1959
- BGN DRIVE
- ALIEN
- REVO-1