

# MS-50G v3.00 Firmware Update Guide

## For Windows

Copyright(C) 2017 ZOOM Corporation. All Rights Reserved.

Ver. 3.00

● Zoom Corporation will bear no responsibility for losses or claims from third parties that result from the use of this software. Moreover, without our permission, distributing, selling, leasing, renting, altering or reverse engineering of this software is prohibited. Furthermore, the specifications of this software and the contents of this document could be changed without notice in the future.

Windows® is a registered trademark of Microsoft® Corporation.

Note: Other Product names, registered trademarks and company names in this document are the property of their respective companies.

Note: All trademarks and registered trademarks in this document are for identification purposes only and are not intended to infringe on the copyrights of their respective owners.

The explanatory illustrations in this manual might differ in appearance from the actual screens on the unit.

## 1. Supported operating systems

Windows® 7 SP1 or later (32-bit/64-bit)

Windows® 8.1 (32-bit/64-bit)

Windows® 10.1 (32-bit/64-bit)

### Important preparations

**1) Log in to your computer using an account with administrator privileges.**

2) Before launching this application, quit all other running applications.

## 2. Introduction

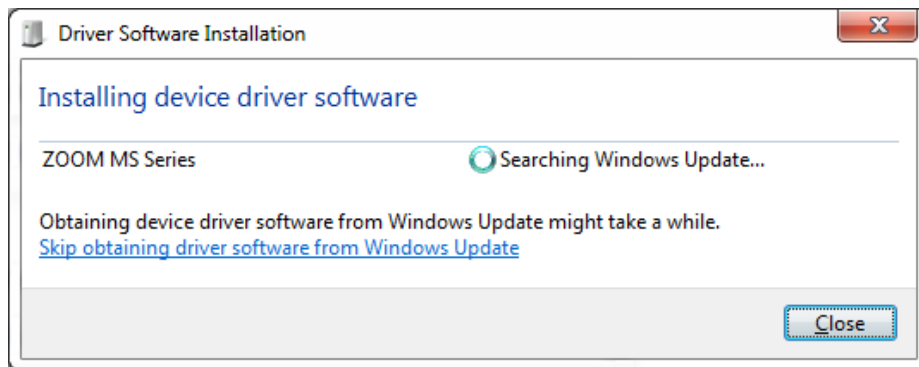
Thank you for downloading the “ZOOM MS-50G System v3.00 Updater” application.  
This document explains how to update the MS-50G firmware.

## 3. Checking the MS-50G firmware versions

Following the procedures on page 22 of the MS-50G operation manual, check the firmware versions of your MS-50G. If the SYSTEM version is v3.00 or higher, you do not need to use this application to update the firmware. If the system version is lower than v3.00, follow the procedures below to update the firmware.

## 4. Installing the standard Windows driver on the computer

Connect the MS-50G to the computer using a USB cable. If you connect to a USB port that is different from the one that you used when installing the Windows standard driver previously, "Driver Software Installation" will appear.



After a short time, the standard driver installation will complete.

## 5. Updating the firmware

Before updating the firmware, if any MIDI or audio devices are connected by USB cable to the computer you are using, disconnect them all. In addition, if any applications are running, quit them all.

- 5.1. When the MS-50G power is OFF, while pressing and holding both its up and down keys, connect it by USB cable to a USB port on the computer.

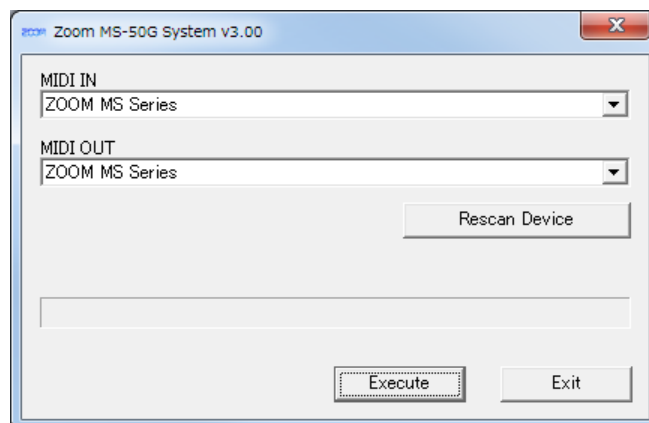
This operation puts the MS-50G into a state ready to receive a firmware update, and its display shows a firmware update standby screen.

### NOTE

The firmware update requires the standard driver. Follow the instructions of the wizard to complete its installation. (See “Installing the standard Windows driver on the computer” on page 2.)

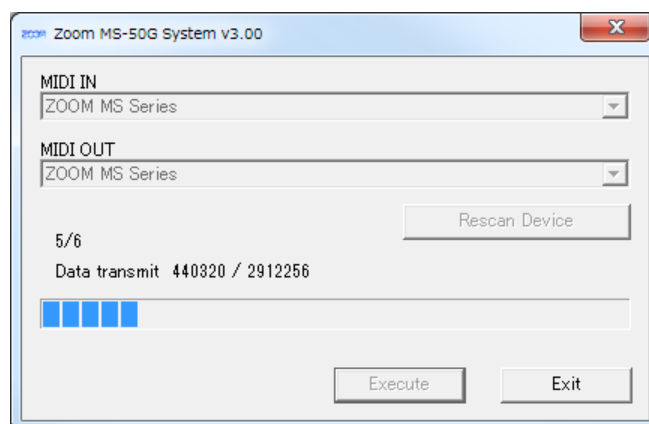
- 5.2. Double-click the “ZOOM MS-50G System v3.00 Updater” icon for the firmware updating application to launch it.

After launching, a window that looks like this appears.



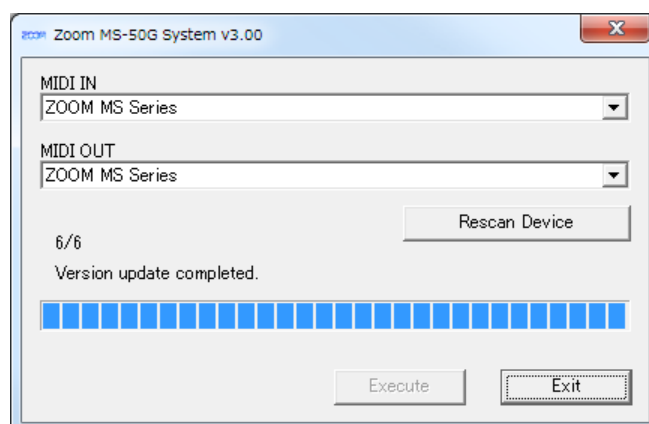
- 5.3. Confirm that “ZOOM MS Series” appears in both the “MIDI IN” and “MIDI OUT” fields. If it does not, click the field to open a list of MIDI devices and select “ZOOM MS Series.”

- 5.4. Click the **Execute** button to start the firmware update. The progress of the firmware update appears as a bar like this.



Do not disconnect the USB cable while the firmware is being updated.

- 5.5. When the firmware update completes, a message like this appears.



Click the **Exit** button to quit the firmware updater application.

When "Complete" appears on the MS-50G display, disconnect the USB cable and turn its power off.

Turn the MS-50G power ON again and confirm that the BOOT version is now v1.10 and the SYSTEM version is now v3.00.

This completes the firmware update.